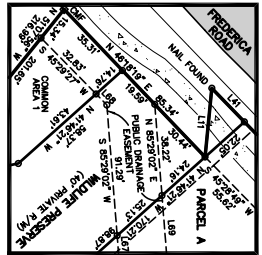
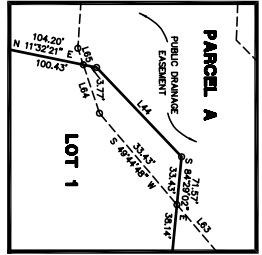
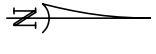


THE BEARINGS SHOWN HEREON ARE BASED
 ON THE SURVEY OF THE BOUNDARIES OF THE
 PARCEL A, REFERENCE TO SHEET 1-A.



NOW OR FORMERLY
 COASTAL GEORGIA
 LAND TRUST, INC.
 (O.B. 737, P.C. 228)

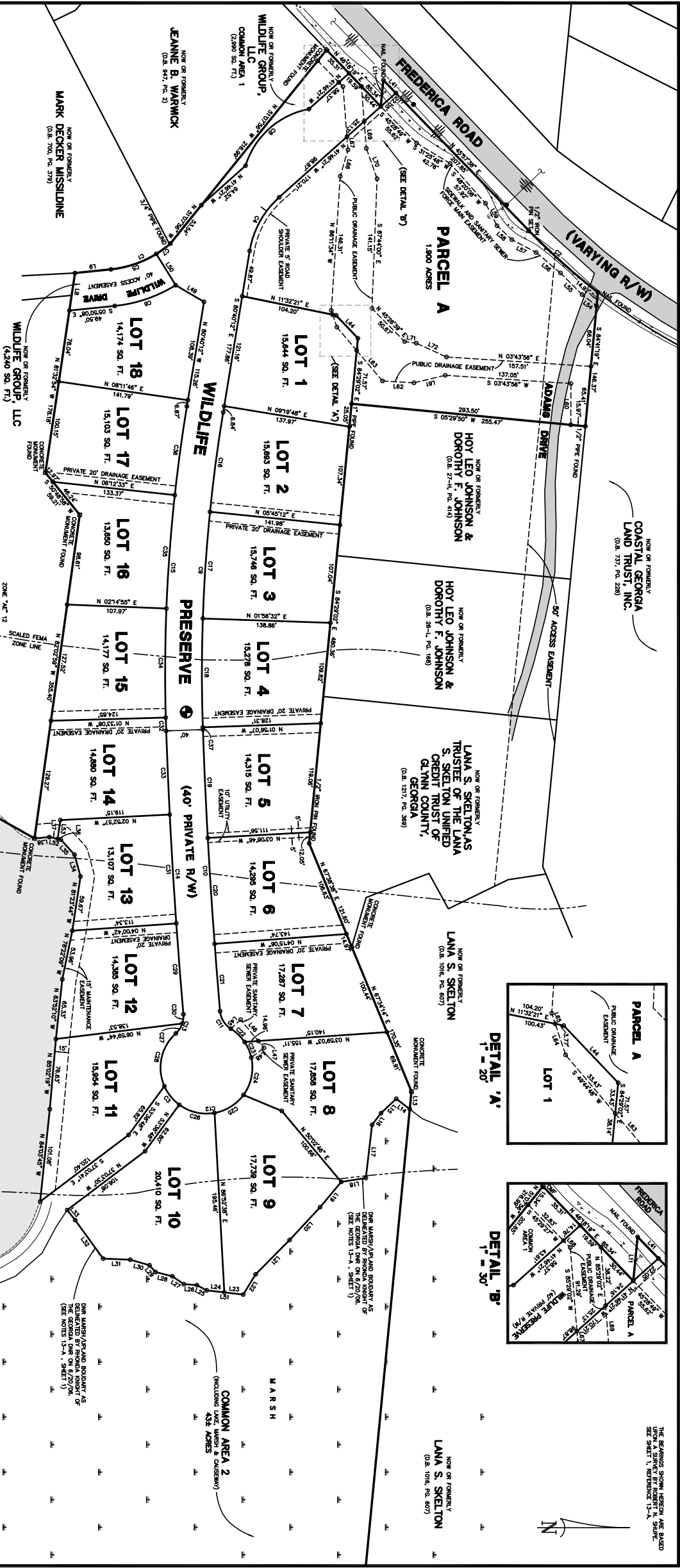
NOW OR FORMERLY
 HOY LEO JOHNSON &
 DOROTHY F. JOHNSON
 (O.B. 27-44, P.C. 410)

NOW OR FORMERLY
 HOY LEO JOHNSON &
 DOROTHY F. JOHNSON
 (O.B. 28-L, P.C. 188)

NOW OR FORMERLY
 LANA S. SKELTON, AS
 TRUSTEE OF THE LANA
 S. SKELTON UNIFIED
 CREDIT TRUST OF
 GLYNN COUNTY,
 GEORGIA
 (O.B. 1217, P.C. 388)

NOW OR FORMERLY
 LANA S. SKELTON
 (O.B. 1016, P.C. 607)

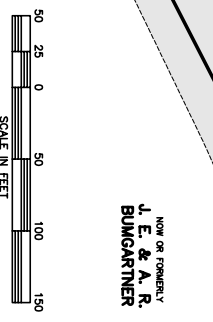
NOW OR FORMERLY
 LANA S. SKELTON
 (O.B. 1016, P.C. 607)



GRADE	BEARINGS	ARC LENGTH	CHORD LENGTH	CHORD BEARING
C1	89.970°	100.98'	100.98'	N 41.975° E
C2	50.000°	63.17'	63.17'	N 89.970° E
C3	50.000°	63.17'	63.17'	S 89.970° W
C4	116.277°	92.87'	92.87'	S 17.719° E
C5	116.277°	92.87'	92.87'	S 17.719° E
C6	116.277°	92.87'	92.87'	S 17.719° E
C7	116.277°	92.87'	92.87'	S 17.719° E
C8	116.277°	92.87'	92.87'	S 17.719° E
C9	116.277°	92.87'	92.87'	S 17.719° E
C10	116.277°	92.87'	92.87'	S 17.719° E
C11	116.277°	92.87'	92.87'	S 17.719° E
C12	116.277°	92.87'	92.87'	S 17.719° E
C13	116.277°	92.87'	92.87'	S 17.719° E
C14	116.277°	92.87'	92.87'	S 17.719° E
C15	116.277°	92.87'	92.87'	S 17.719° E
C16	116.277°	92.87'	92.87'	S 17.719° E
C17	116.277°	92.87'	92.87'	S 17.719° E
C18	116.277°	92.87'	92.87'	S 17.719° E
C19	116.277°	92.87'	92.87'	S 17.719° E
C20	116.277°	92.87'	92.87'	S 17.719° E
C21	116.277°	92.87'	92.87'	S 17.719° E
C22	116.277°	92.87'	92.87'	S 17.719° E
C23	116.277°	92.87'	92.87'	S 17.719° E
C24	116.277°	92.87'	92.87'	S 17.719° E
C25	116.277°	92.87'	92.87'	S 17.719° E
C26	116.277°	92.87'	92.87'	S 17.719° E
C27	116.277°	92.87'	92.87'	S 17.719° E
C28	116.277°	92.87'	92.87'	S 17.719° E
C29	116.277°	92.87'	92.87'	S 17.719° E
C30	116.277°	92.87'	92.87'	S 17.719° E
C31	116.277°	92.87'	92.87'	S 17.719° E
C32	116.277°	92.87'	92.87'	S 17.719° E
C33	116.277°	92.87'	92.87'	S 17.719° E
C34	116.277°	92.87'	92.87'	S 17.719° E
C35	116.277°	92.87'	92.87'	S 17.719° E
C36	116.277°	92.87'	92.87'	S 17.719° E
C37	116.277°	92.87'	92.87'	S 17.719° E

LINE	BEARING	DISTANCE
L1	N 89.970° E	100.98'
L2	N 41.975° E	63.17'
L3	N 89.970° E	63.17'
L4	S 89.970° W	63.17'
L5	S 17.719° E	92.87'
L6	S 17.719° E	92.87'
L7	S 17.719° E	92.87'
L8	S 17.719° E	92.87'
L9	S 17.719° E	92.87'
L10	S 17.719° E	92.87'
L11	S 17.719° E	92.87'
L12	S 17.719° E	92.87'
L13	S 17.719° E	92.87'
L14	S 17.719° E	92.87'
L15	S 17.719° E	92.87'
L16	S 17.719° E	92.87'
L17	S 17.719° E	92.87'
L18	S 17.719° E	92.87'
L19	S 17.719° E	92.87'
L20	S 17.719° E	92.87'
L21	S 17.719° E	92.87'
L22	S 17.719° E	92.87'
L23	S 17.719° E	92.87'
L24	S 17.719° E	92.87'
L25	S 17.719° E	92.87'
L26	S 17.719° E	92.87'
L27	S 17.719° E	92.87'
L28	S 17.719° E	92.87'
L29	S 17.719° E	92.87'
L30	S 17.719° E	92.87'
L31	S 17.719° E	92.87'
L32	S 17.719° E	92.87'
L33	S 17.719° E	92.87'
L34	S 17.719° E	92.87'
L35	S 17.719° E	92.87'

LINE	BEARING	DISTANCE
L36	N 89.970° E	100.98'
L37	N 41.975° E	63.17'
L38	N 89.970° E	63.17'
L39	N 41.975° E	63.17'
L40	N 89.970° E	63.17'
L41	N 41.975° E	63.17'
L42	N 89.970° E	63.17'
L43	N 41.975° E	63.17'
L44	N 89.970° E	63.17'
L45	N 41.975° E	63.17'
L46	N 89.970° E	63.17'
L47	N 41.975° E	63.17'
L48	N 89.970° E	63.17'
L49	N 41.975° E	63.17'
L50	N 89.970° E	63.17'
L51	N 41.975° E	63.17'
L52	N 89.970° E	63.17'
L53	N 41.975° E	63.17'
L54	N 89.970° E	63.17'
L55	N 41.975° E	63.17'
L56	N 89.970° E	63.17'
L57	N 41.975° E	63.17'
L58	N 89.970° E	63.17'
L59	N 41.975° E	63.17'
L60	N 89.970° E	63.17'
L61	N 41.975° E	63.17'
L62	N 89.970° E	63.17'
L63	N 41.975° E	63.17'
L64	N 89.970° E	63.17'
L65	N 41.975° E	63.17'
L66	N 89.970° E	63.17'
L67	N 41.975° E	63.17'
L68	N 89.970° E	63.17'
L69	N 41.975° E	63.17'
L70	N 89.970° E	63.17'
L71	N 41.975° E	63.17'
L72	N 89.970° E	63.17'
L73	N 41.975° E	63.17'
L74	N 89.970° E	63.17'
L75	N 41.975° E	63.17'



SHEET 2 OF 2
 SURVEY FOR: **WILDLIFE GROUP, LLC**
 DATE: 6/27/07 SCALE: 1" = 50' JOB # 02087D
SRUBE SURVEYING COMPANY, P.C.
 3537 DARGEN HIGHWAY
 BRUNSWICK, GEORGIA 31525
 912-265-0562

